



ABSOLUTE
PROPERTY

Sopers House, Soper Road, Cuffley EN6 4RY

☎ 020 8882 8156 📠 020 8882 8155

✉ info@absolutepropertyagents.com

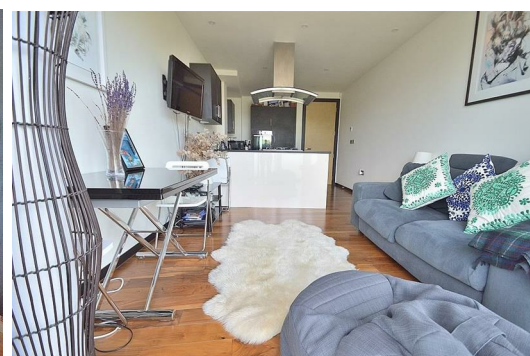
🌐 www.absolutepropertyagents.com



**12 Crystal Court, 95 Bramley Road
N14 4EY**

£1,850 PCM

Absolute Property are pleased to offer this luxury two bedroom second floor apartment within a lovely gated development within seconds walk of Oakwood Station. The property boasts a stunning finish throughout with under floor heating throughout, a luxury kitchen and bathroom, balcony, en-suite and allocated gated parking. The property is available end of March 2025. Please call to arrange a viewing.



**12 Crystal Court, 95 Bramley Road
N14 4EY**

ENTRANCE:

Front door opening to:

HALLWAY:

Wood flooring with Led lighting, ceiling spot lights, doors to kitchen/living, bedroom one, bedroom two, family bathroom, airing cupboard.

KITCHEN/LIVING ROOM:

20.4 x 10.9 (6.10m.1.22m x 3.05m.2.74m)

Range of eye and base level units with granite worktops, built in oven, gas hob and extractor, integrated fridge/freezer, washing machine and dishwasher, wood flooring, tv socket, ceiling spot lights, bi folding doors opening to balcony to front aspect.

BEDROOM ONE:

12.4 x 9 (3.66m.1.22m x 2.74m)

Ceiling spot lights, floor to ceiling double glazed tilt and slide window to rear aspect, door to en suite.

EN SUITE:

Comprising of low flush wc, vanity unit wash basin with mixer taps, shower cubicle, extractor fan, and heated towel rail.

BEDROOM TWO:

12.2 x 8.7 (3.66m.0.61m x 2.44m.2.13m)

Ceiling spot lights, wood flooring, double glazed floor to ceiling tilt and slide window to rear aspect.

BATHROOM:

Three piece suite comprising of low flush wc, vanity unit hand wash basin with mixer taps, bath with shower unit, ceiling spot lights, extractor fan, and heated towel rail.

